

Duralife

By



# Adding value to homes and lifestyles since 1962





All Duralum  
Products are  
proudly  
manufactured  
in the United  
States of  
America!

Duralum employees offer over 800 years of manufacturing experience!





# All Duralum Products come with a transferable lifetime warranty



**DURALUM PRODUCTS, INC.**

## **WARRANTIES**

### **TRANSFERABLE LIFETIME FULL WARRANTY**

**Full Warranty** – Duralum warrants that its Patio Covers, Room Enclosures, Weatherwood products, Carports, Doorhoods, Dockcovers, Window Awnings, Privacy Screens, Sunrooms, Screen Rooms and Handrail, when installed with proper engineering and permitting in accordance with local building codes and in accordance with Duralum's installation instructions, are free from defects in material and workmanship and the finish on the products will not chip, peel, flake, or blister under conditions of ordinary wear for the lifetime of the product, except as provided below under "Exclusions and Limitations" and except for those product components which are covered under a separate ten-year limited warranty as provided

under the "Ten-Year Limited Warranty" below. Warranty is fully transferable to all future owners of the property where the products covered under either of these warranties were installed.

**What Duralum Will Do** – Duralum shall have one hundred twenty (120) days to repair any defects covered under this Full Warranty. In the event repair is not possible, Duralum will either replace the defective product, or refund the full purchase price of the product. Duralum reserves the right to discontinue or change the design or color of any of its products. If for a reason the original product is not available, Duralum may substitute another product of comparable quality.

### **TEN YEAR LIMITED WARRANTY**

**Limited Warranty** – For a period of ten (10) years after original installation, Duralum warrants that any insulated glass lites, laminated panels, and skylights contained in the company's products are free from defects in material and workmanship, except as provided below under "Exclusions and Limitations."

**What Duralum Will Do** – Duralum shall have 120 days to repair any defects covered under this Limited Warranty. In the event repair is not possible, Duralum will either replace the defective component or refund the full purchase price of that component. During the

first year after installation of the product, Duralum will pay for any labor charges associated with the removal and installation of any defective component under this Limited Warranty. After the first year, the customer will be responsible for any labor and transportation charges in connection with the removal and installation of any defective component under this Limited Warranty. Duralum reserves the right to discontinue or change the design or color of any product. If for any reason the original product is not available, Duralum may substitute another product of comparable quality.

### **EXCLUSIONS AND LIMITATIONS; CLAIMS PROCEDURES FOR ALL WARRANTIES**

**Exclusions and Limitations** – Neither of these warranties covers any chipping, peeling, flaking or blistering of the products as the result of damage of any kind resulting from faulty or improper installation, accidental or intentional damage, settling, structural shrinkage or other distortion of the property structure, popping or creaking due to expansion or contraction, acts of God, harmful chemicals (including harmful cleaning compounds), fumes or vapors, surface deterioration due to air pollution, "normal weathering", condensation, mildew accumulation, impact of foreign objects, rust or corrosion of any of any components of the products, or the failure of the owner to provide reasonable maintenance of the product per the instructions on the reverse side. Neither of these warranties covers fading of any painted finish due to normal weathering, or any rust of any components of the products, including but not limited to, screws and other fasteners, and any steel components. Also, no warranty applies if the product has been painted or the surface has been altered. "Normal weathering" is defined as the damaging effects of sunlight and the extremes of weather and atmosphere that may cause any colored surface to fade or become soiled or stained.

The degree to which normal weathering occurs depends on air quality, location & other local conditions. Fading of darker colors may occur more significantly than lighter colors in exposed sunlight and is considered "normal weathering".

**Claims Procedure** – Any claim for breach of warranty shall be sent to Duralum Products, Inc., 8269 Alpine Ave., Sacramento, CA 95826-9962, within thirty (30) days of first discovering the claimed defect. The claim shall describe the defect, indicate the discovery date, and list the date and location where product was installed as well as the name of the contractor who installed the product. Claim should include copies of both this warranty and the signed contract covering the work performed. Duralum shall then have a reasonable time to inspect the defect. This Warranty dated January 1, 2011 supersedes previous versions.

**How State Law Applies** – These warranties give you specific legal rights. You may also have other rights that vary from state to state.

**Product Registration** – No Registration is necessary. Keep this warranty with your contract in case of a claim.

Duralum patio enclosure systems utilize recycled aluminum and glass.



Recycled products use far less fossil fuels.  
This is why we consider the Duralife  
Product a responsible building material.



# Duralife rooms are energy efficient

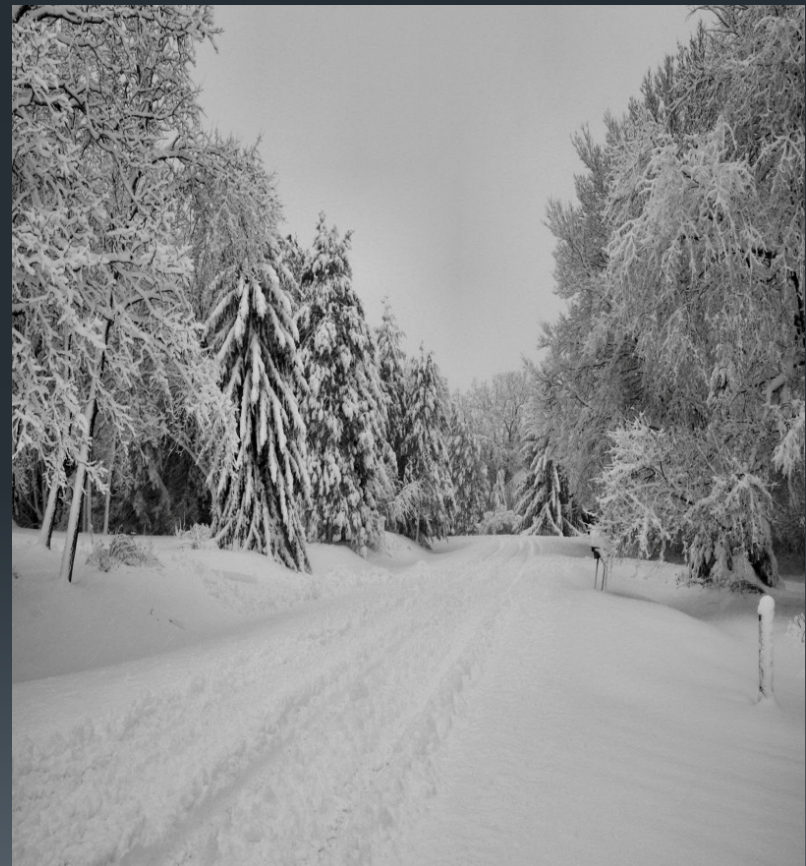
Advanced technology in the Duralife enclosure system allows a comfortable environment despite the heat outside.





# Duralum rooms are energy efficient

Advanced insulation technology in the Duralife enclosure system keeps the heat and cool air you pay for inside your space.

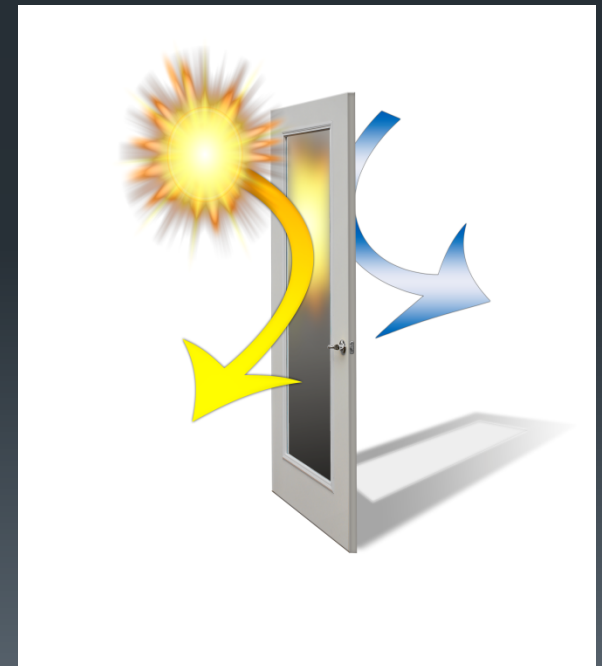


- Duralum Products utilizes coated & insulated Solarban 60 glass

- Most advanced wall insulation available

- Thermally broken wall components come standard

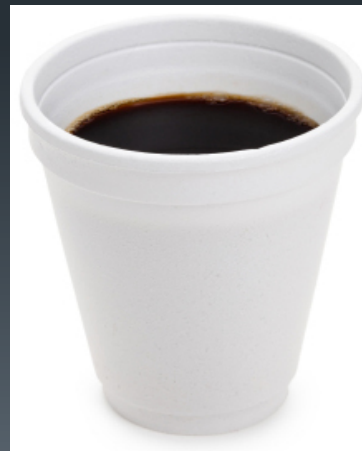
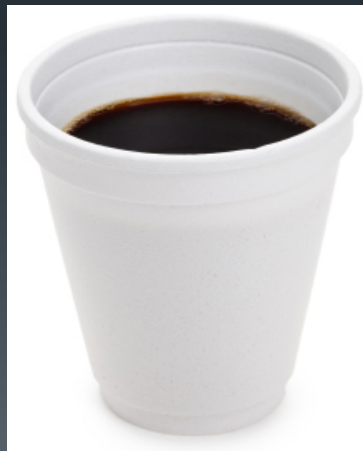
Duralife enclosure systems use Dura-Ble high performance glass. The combination of 5/8ths thick OA dual pane glass and Solarban 60 coating prevents heat and cold from entering your enclosure.



# EPS

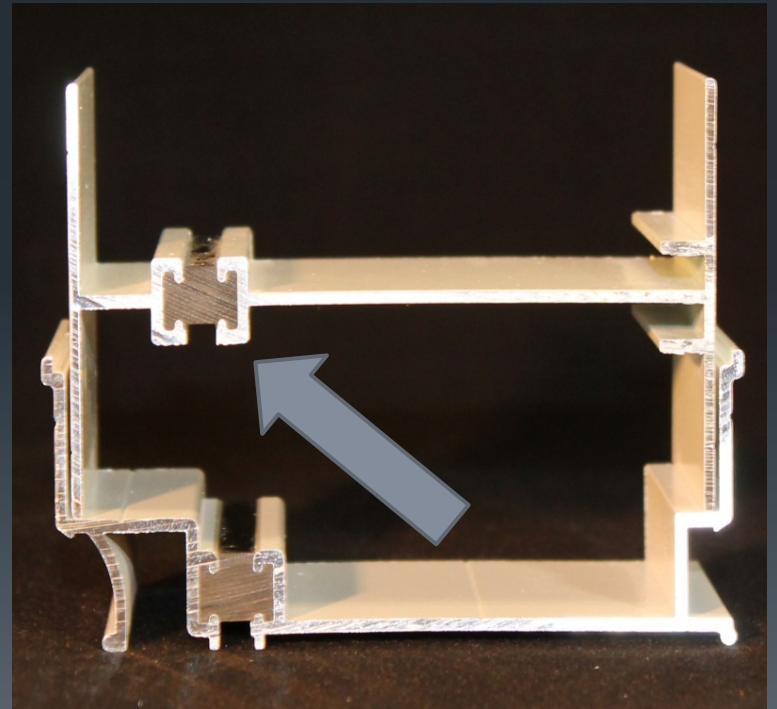
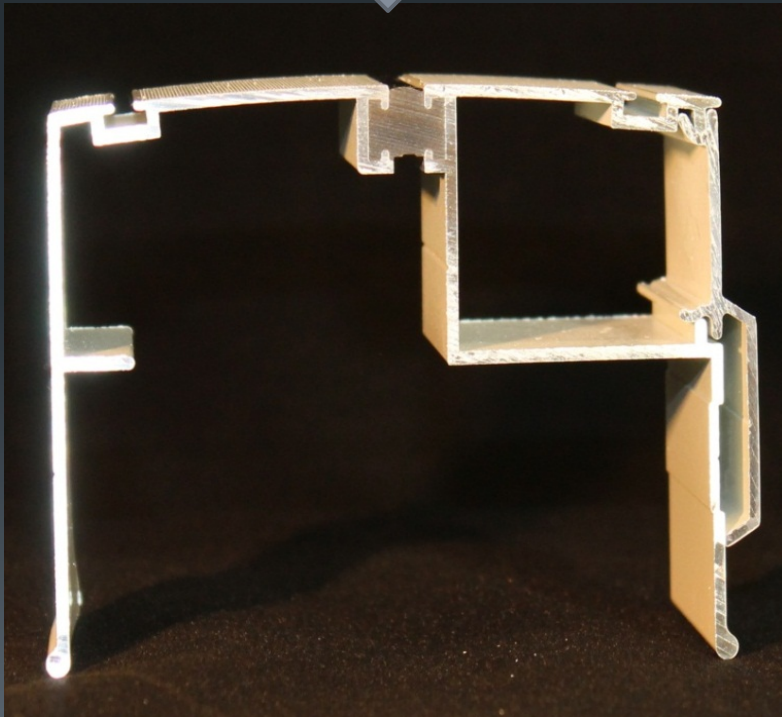
Expanded polystyrene, the same foam used in coffee cups is used in the solid sections of your Duralife enclosure system.

If  $1/16^{\text{th}}$  of an inch of EPS can keep your hand from getting burned IMAGINE what 4 inches can do to insulate your enclosure.





Duralife enclosure system is completely thermally broken



Your Duralife enclosure system is available with full light 3068 man doors





6068  
French  
doors  
also  
available



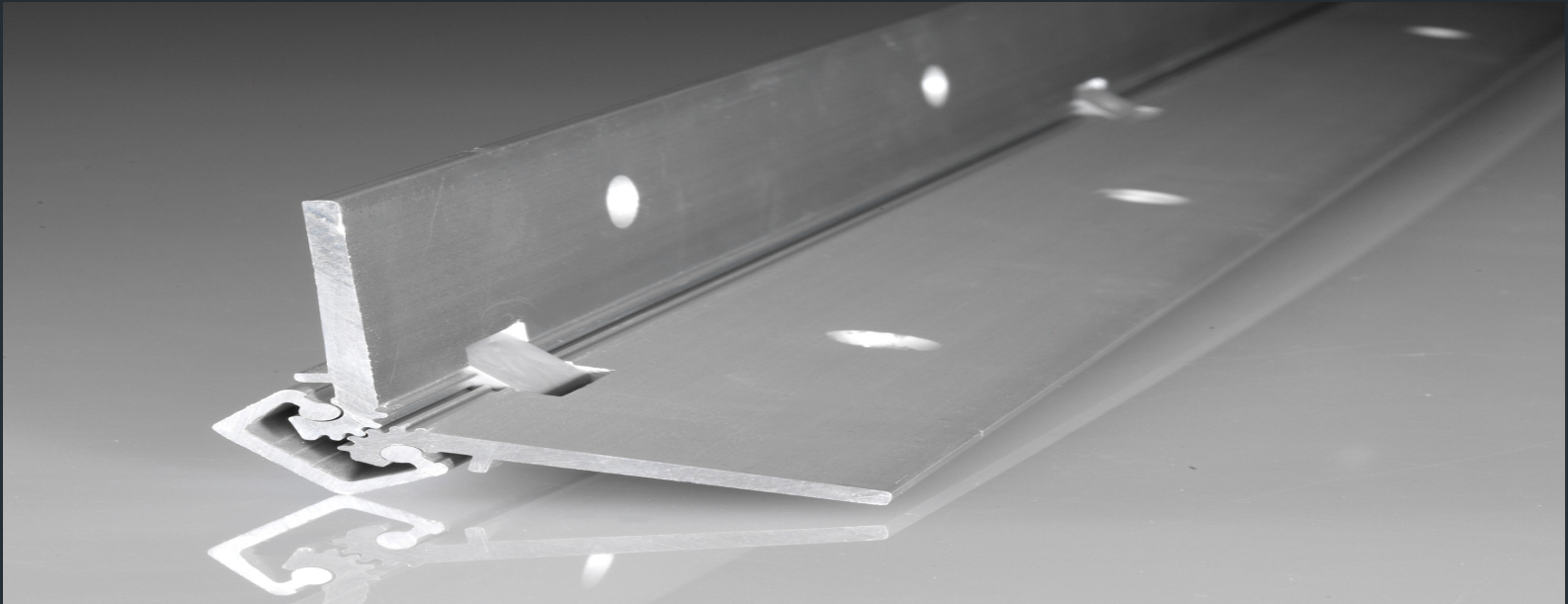


Designer half moon panel doors are available in 3068 single man-door or French doors.





6068  
Slider is  
also  
available



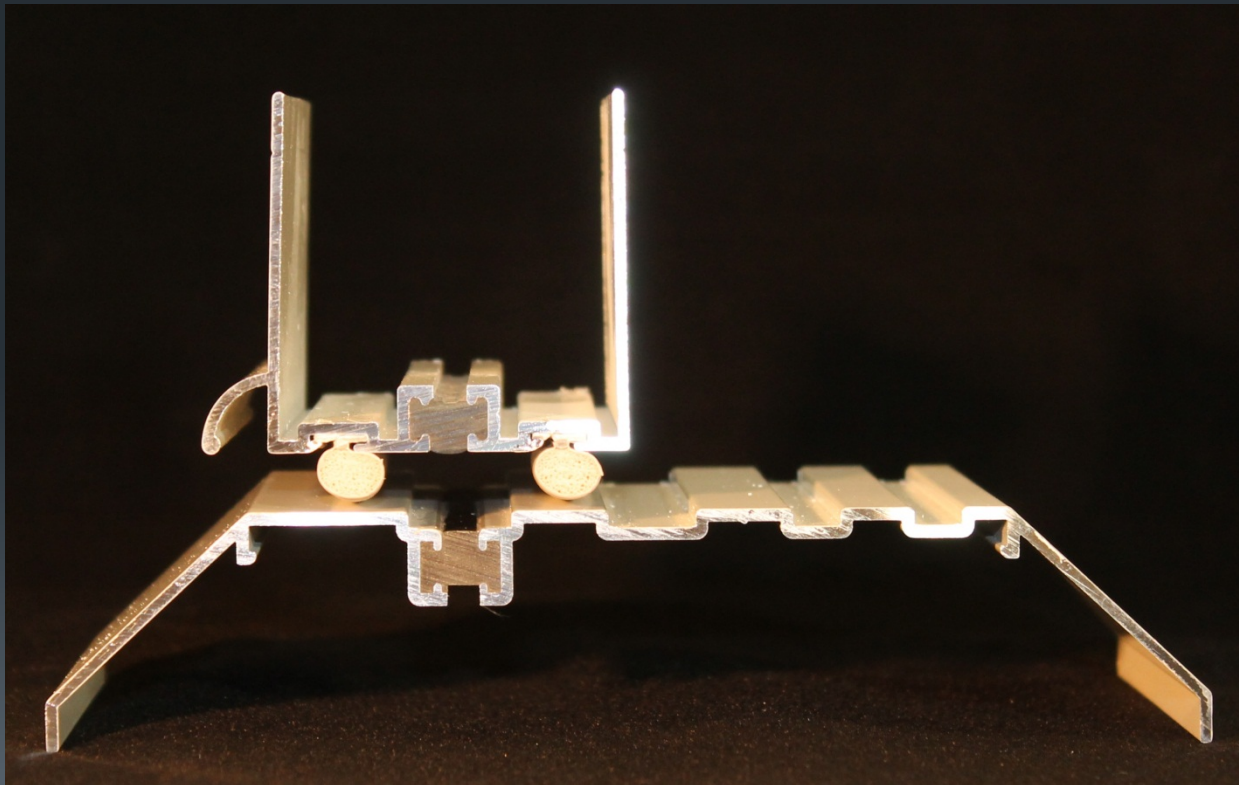
Full length mechanical hinges prevent doors from sagging by distributing load stresses uniformly. Very little effort is required to open doors and wear and tear is virtually eliminated.

All Duralife enclosure systems come standard with steel clad doors which allows us to utilize a magnetic gasket.





A dual gasket system is used to seal the bottom of the door to the threshold.





# Duralife Windows

- **Five foot tall windows**
- **Available widths 36", 42", 48" and 60"**
- **Fully thermally broken to prevent heat and cold transfer**
- **Comes standard with Dura-Ble dual pane Low-E square insulated glass**

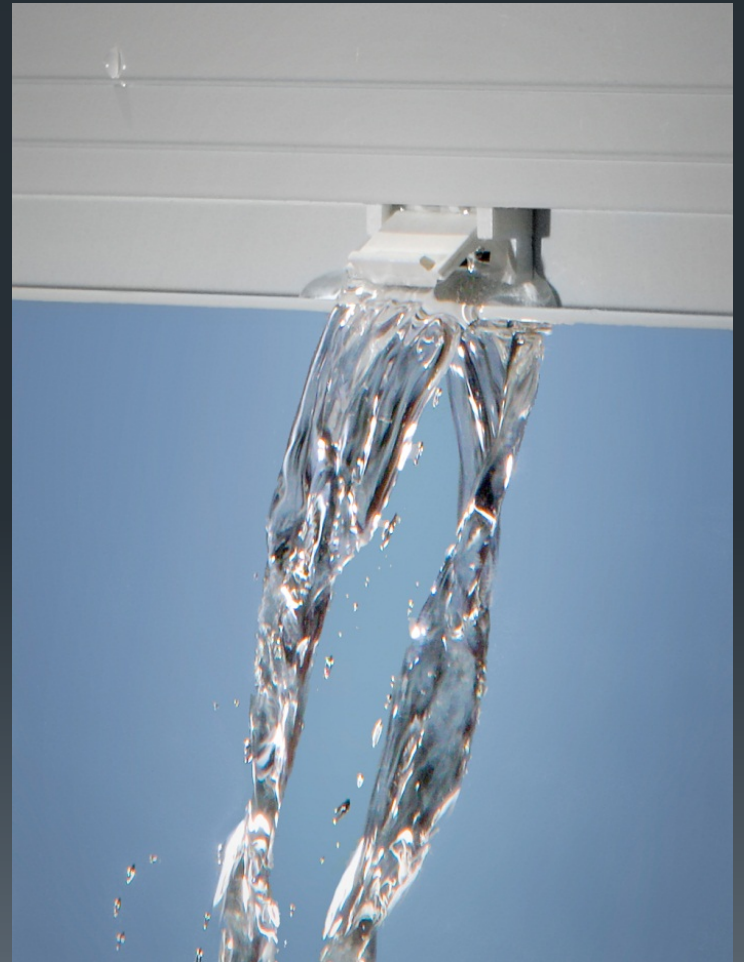
# Adjustable cam locks



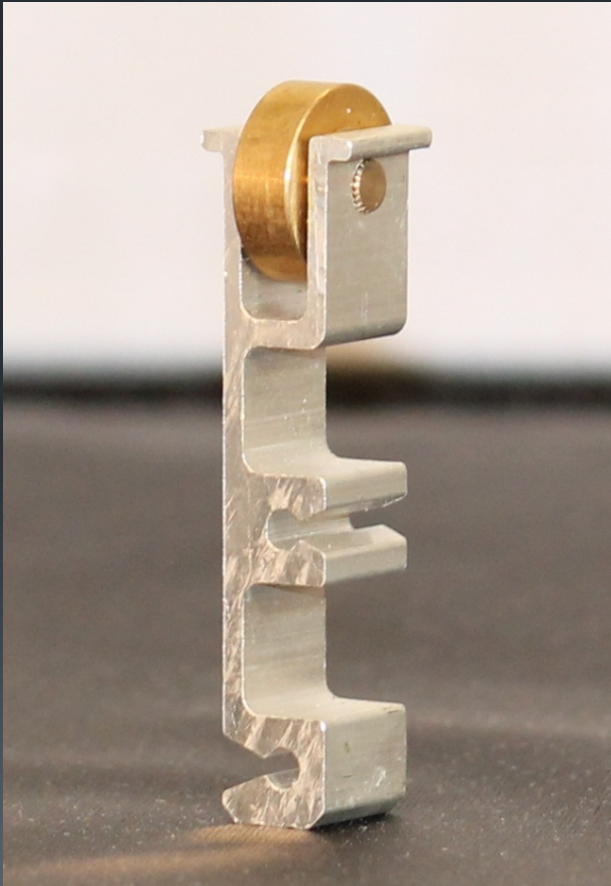
- Heavy duty cast aluminum
- Never requires adjustment
- Zero failure rate

# Duralife Window Weeps

One way weep cover allows water to flow out and prevents wind and pests from entering.



# Duralife Heavy Duty Window Roller



- Durable Extruded Frame
- Self lubricating brass wheel
- Fully adjustable
- Zero maintenance



# See life differently through Duralife windows!

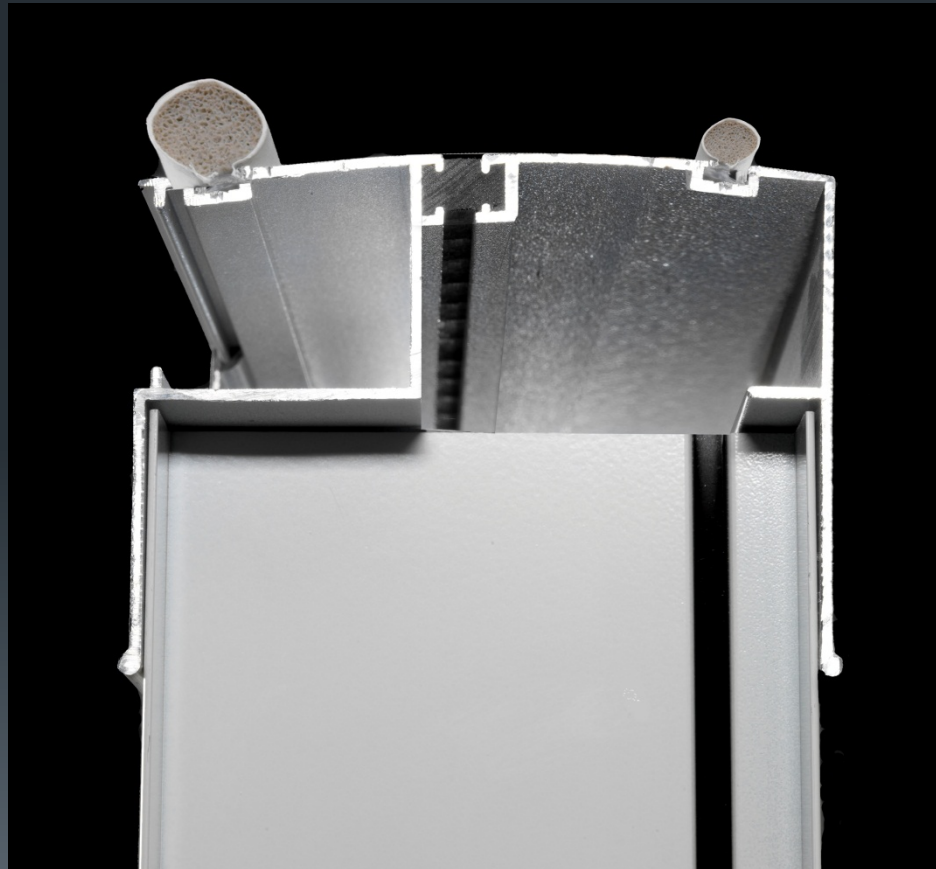


# Duralife



- The Duralife enclosure system complies with local codes and allows the installation of electrical wiring
- Hidden channels allow the use of plugs, switches and light fixtures
- Convenient snap caps cover electrical chases

Duralum's electric header comes standard with a dual gasket seal that neatly seals the space between the roof and walls





# Duralife



- Duralum Insulated Roof is available in 3" and 4.25" thickness
- Constructed using heavy duty structural EPS for insulation
- Available with electric raceways to allow for fans and lights



# Duralife

- Duralum Insulated Roofs can be installed as enclosure roofs as well as patio roofs or in this example both.
- A Duralum Insulated Roof allows you to install an insulated patio cover and later turn it into an enclosure.



# Design that fits your lifestyle! Outdoor living space!





Continue the transition into outdoor living spaces with Duralum's Weatherwood patio products!



# Who to consider while designing your Duralife custom enclosure...

- Authorized Duralum dealer?
- Contractors License in good standing?
- Bonded and Insured?
- Quality employees?





# Things to consider while designing your Duralife custom enclosure

- How do you envision using the enclosure?
- Size
- How does the sun rising and setting effect your vision?
- Are there any limitations in regards to design?
- How much incoming light are you looking for?



# Things to consider while designing your Duralife custom enclosure

- Do you think having one or more ceiling fans will add to your comfort?
- Have you thought about how many switches and plugs you would like installed?
- Do we need to run wiring for audio video?



- ✓ Right Manufacturer
- ✓ Right Product
- ✓ Right Design
- ✓ Right Contractor
- ✓ Right Now!

